

Rob Rinaldi

Photographs &  
Common Moments



The Iris Gallery of Fine Art Photography

413.644.0045 | 617.895.8951

THE IRIS GALLERY OF FINE ART  
[alison@irisgallery.net](mailto:alison@irisgallery.net)  
413.644.0045

THE E IN ME

Archival Pigment Ink Print,  
with Encaustic Bee's Wax  
signed, Rob Rinaldi



LESSON 3.

*ē*, long, in *mē*.

LESSON 3.

*ē*, long, in *mē*.

To the pupil.—Look at each word till you can turn away and see a perfect picture of it in your mind. Study down the columns, then from left to right.

<i>ē</i>	<i>ēa</i>	<i>ēa</i>	<i>ēe</i>
eve	bleak	near	kneel
mere	preach	means	cheer
scene	cheat	peak	fleece
scheme	heave	please	screen
sphere	least	sheaf	freeze
theme	leave	streak	queer

Direction.—Copy the following sentences.

*On the eve of the bleak scene,  
he no longer had means to please.*

*He hoped for some streak of cheer,  
some sort of theme that might appear.*

*And he thought of the heart shaped stone.  
"At least," he said, "she can't cheat the  
long e in me and the sphere of fleece green  
that surrounds it."*

*"At least," he thought, "I can be sure the  
heave of emotion means no real harm and  
are truly near and dear."*

To the Teacher.—Call attention to the silent letters in the next lesson.  
Call attention to the punctuation, capitals, rhyme, etc.

THE IRIS GALLERY OF FINE ART  
[alison@irisgallery.net](mailto:alison@irisgallery.net)  
 413.644.0045

POWERS AND ROOTS

Archival Pigment Ink Print,  
 with Encaustic Bee's Wax  
 signed, Rob Rinaldi

E V GAGE



EV  
 GAGE

The story was always about her. He didn't mind, really, but still,  
 it sometimes would have been nice to come to a decision  
 together. Maybe it wasn't really her fault, bad family roots perhaps.  
 There was an upside, he just had to think about it for a while.

XXIX.

POWERS AND ROOTS.

A.—SQUARES AND CUBES.

Find the square of:—

1. 41. 2. 34. 3. 925. 4.  $6\frac{1}{2}$ . 5.  $24\frac{1}{2}$ . 6.  $50\frac{2}{3}$ .

Find the cube of:—

7. 31. 8.  $1\frac{1}{3}$ . 9.  $10\frac{1}{5}$ . 10.  $\frac{1}{2}$ . 11.  $\frac{1}{3}$ . 12.  $31\frac{1}{5}$ .

Find the value of:—

13.  $51\frac{1}{2}$ . 14.  $(2\frac{1}{2})^2$ . 15.  $17^2$ . 16.  $(\frac{2}{3})^2$ . 17.  $(\frac{1}{2})^2$ .  
 18.  $23^2 + 15^2 + 3^2$ . 19.  $1\cdot031^2 - 1\cdot03^2$ . 20.  $372\frac{1}{2}^2 - 36^2$ .  
 21.  $38^2 + 17^2 - 18^2$ . 22.  $39^2 \times 48^2$ .  
 23.  $(397^2 + 397^2) \div 39700$ . 24.  $(15^2 - 1\cdot31^2) \div 15$ .  
 25.  $1\cdot03(4\cdot07 + 3\cdot16)$ . 26.  $3000(1\cdot1 \times 0\cdot31)$ .

B.—SQUARE ROOTS.

Extract the square root of:—

1. 576. 2. 1681. 3. 1156. 4. 4761.  
 5. 18769. 6. 183184. 7. 10404. 8. 266256.  
 9. 1592644. 10. 23409. 11. 00053361. 12. 1073741824.  
 13.  $42\frac{1}{2}$ . 14.  $39\frac{1}{7}$ . 15.  $592\frac{1}{2}$ . 16.  $113\frac{1}{2}$ .  
 17.  $\frac{1}{2}$ . 18.  $\frac{1}{3}$ . 19.  $\frac{1}{4}$ . 20.  $\frac{1}{5}$ .

Find to three decimal places the value of:—

21.  $\sqrt{2}$ . 22.  $\sqrt{6}$ . 23.  $\sqrt{796}$ . 24.  $\sqrt{414}$ .  
 25.  $\sqrt{4\frac{1}{2}}$ . 26.  $\sqrt{8\frac{1}{2}}$ . 27.  $\sqrt{\frac{1}{2}}$ . 28.  $\sqrt{0\cdot0099}$ .  
 29.  $\sqrt{328} + \sqrt{7} + \sqrt{5}$ . 30.  $\sqrt{1142\cdot44} + \sqrt{11\cdot6281}$ .  
 31.  $5\sqrt{3} + 3\sqrt{5}$ . 32.  $\sqrt{47} + \sqrt{90}$ .

Find a mean proportional, correct to 3 places, to:—

33. 25 and 9. 34. 8 and 18. 35. 28 and 63. 36. 7 and 13.  
 37.  $\frac{1}{2}$  and  $\frac{1}{3}$ . 38. 25 and 81. 39.  $\frac{1}{4}$  and  $\frac{1}{7}$ . 40. 12 and 48.

THE IRIS GALLERY OF FINE ART  
 alison@irisgallery.net  
 413.644.0045

INSURANCE 5

Archival Pigment Ink Print,  
 with Encaustic Bee's Wax  
 signed, Rob Rinaldi



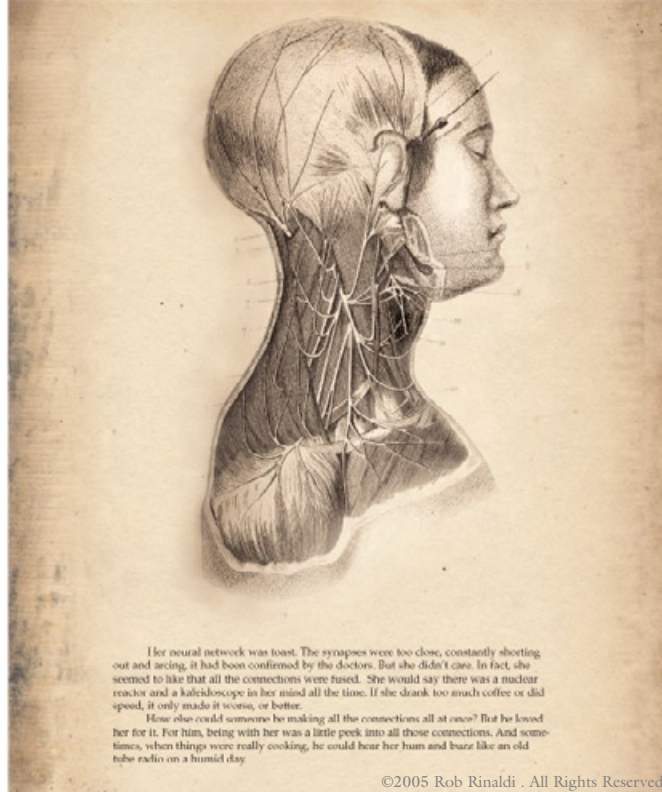
THE IRIS GALLERY OF FINE ART

[alison@irisgallery.net](mailto:alison@irisgallery.net)

413.644.0045

TOAST, *with text*

Archival Pigment Ink Print,  
*with Encaustic Bee's Wax & Mixed media*  
*signed, Rob Rinaldi*



THE IRIS GALLERY OF FINE ART  
[alison@irisgallery.net](mailto:alison@irisgallery.net)  
413.644.0045

GOD'S SPARE PARTS, *with text*

Archival Pigment Ink Print,  
*with* Encaustic Bee's Wax & Mixed media  
*signed*, Rob Rinaldi





THE IRIS GALLERY OF FINE ART  
*alison@irisgallery.net*  
413.644.0045

---

HULA DANCER

Archival Pigment Ink Print,  
*with Encaustic Bee's Wax*  
*signed, Rob Rinaldi*



©2005 Rob Rinaldi . All Rights Reserved

THE IRIS GALLERY OF FINE ART  
[alison@irisgallery.net](mailto:alison@irisgallery.net)  
413.644.0045

---

POPPY SEED

Archival Pigment Ink Print,  
*with* Encaustic Bee's Wax  
*signed*, Rob Rinaldi



©2005 Rob Rinaldi . All Rights Reserved

THE IRIS GALLERY OF FINE ART  
[alison@irisgallery.net](mailto:alison@irisgallery.net)  
413.644.0045

---

CONE FLOWER

Archival Pigment Ink Print,  
*with* Encaustic Bee's Wax  
*signed*, Rob Rinaldi



©2005 Rob Rinaldi . All Rights Reserved

THE IRIS GALLERY OF FINE ART  
*alison@irisgallery.net*  
413.644.0045

---

BLUE BALL

Archival Pigment Ink Print,  
*with Encaustic Bee's Wax*  
*signed, Rob Rinaldi*



©2005 Rob Rinaldi . All Rights Reserved

THE IRIS GALLERY OF FINE ART  
[alison@irisgallery.net](mailto:alison@irisgallery.net)  
413.644.0045

---

DRY SUNFLOWER

Archival Pigment Ink Print,  
*with* Encaustic Bee's Wax  
*signed*, Rob Rinaldi



©2005 Rob Rinaldi . All Rights Reserved.

THE IRIS GALLERY OF FINE ART  
[alison@irisgallery.net](mailto:alison@irisgallery.net)  
413.644.0045

---

YELLOW FLOWER

Archival Pigment Ink Print,  
with Encaustic Bee's Wax  
signed, Rob Rinaldi



©2005 Rob Rinaldi . All Rights Reserved

THE IRIS GALLERY OF FINE ART  
[alison@irisgallery.net](mailto:alison@irisgallery.net)  
413.644.0045

---

TALKING SPADE

Archival Pigment Ink Print,  
with & w/o Encaustic Wax  
*signed*, Rob Rinaldi



©2007 Rob Rinaldi . All Rights Reserved



## *About the Artist - Rob Rinaldi*

---

THE IRIS GALLERY OF FINE ART  
[alison@irisgallery.net](mailto:alison@irisgallery.net)  
413.644.0045

---

Rob Rinaldi became interested in photography at the age of ten after pouring through a Walker Evans book of photographs at his uncle's house. From that moment, he knew his life's passion. Rob has had a dual career in photography; fine art and commercial work. His studies took him to the Maine Photographic Workshop to study with Craig Stevens and Duane Michals. He received his undergraduate fine arts degree from the University of New York at Purchase and studied there extensively with Jan Groover, Jed Devine and John Cohn. Rob went on to the Maryland Institute College of Art to get a Master's degree in fine art and photography and studied with Bill Larson, Jack Wilgus and attended special classes with William Wegman and Matt Mahurin.

After graduate school, Rob moved to southern Connecticut where he worked for photographers Scott Miles, Fred Collins, Karen Heerlein and Allen Green involving himself with all aspects of a commercial studio from set design and location scouting to custom model making and production.

Today, living in Vermont, Rob continues his passion for fine art photography. Though his interests remain similar to the ten-year-old boy flipping through that Walker Evans book, his list of influential artists and photographers paints a much broader swath including Joel-Peter Witkin's nightmares, Peter Goins' stark landscapes, Jonathan Borofsky's story/drawings, Stephen Shores elegant juxtapositions, Gustave Le Gray's 19th century-seascapes and Richard Misrach's sky images.

Rob's current work often focuses on the "indecisive moment." That time, place, or object that seems so common, that can easily be overlooked. By dedicating and distilling the ordinary, Rob attempts to take the banal and raise it up to allow for keener observation. Like an alchemist turning lead to gold, the common, lowly, ugly or unadmired often becomes a canyon of curiosity.